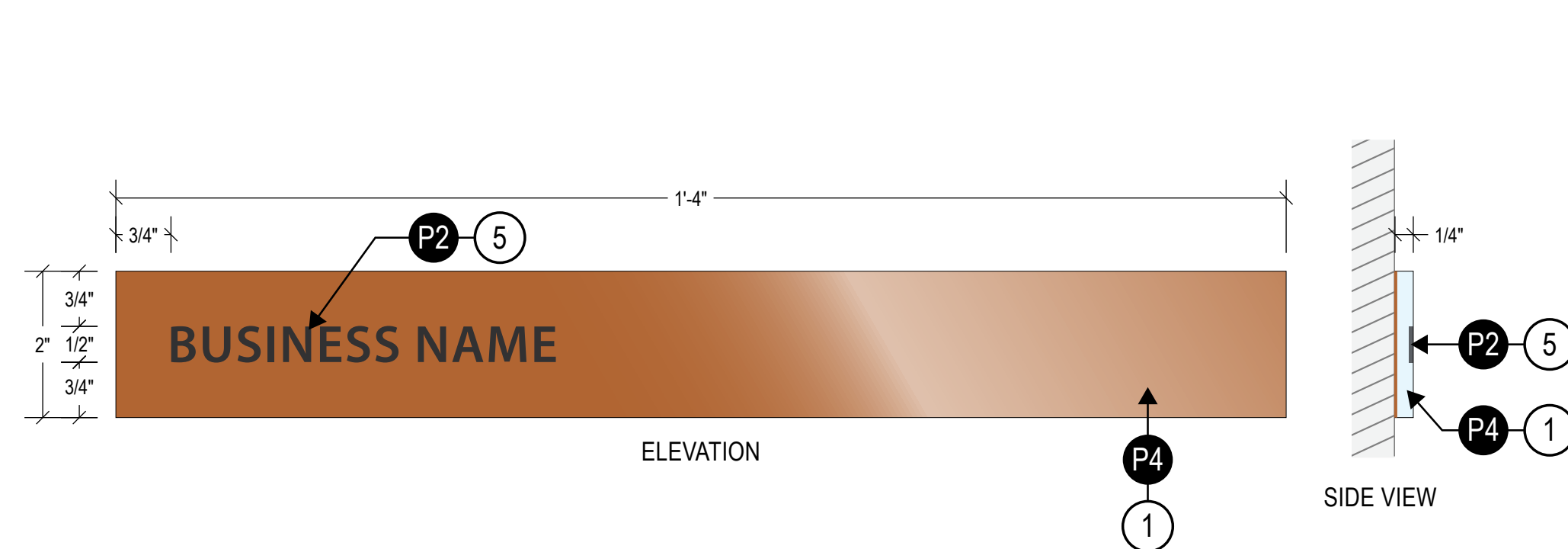


PAVILION SOUTH WALL ELEVATION - DONOR WALL
SCALE: 1/8"=1'-0"



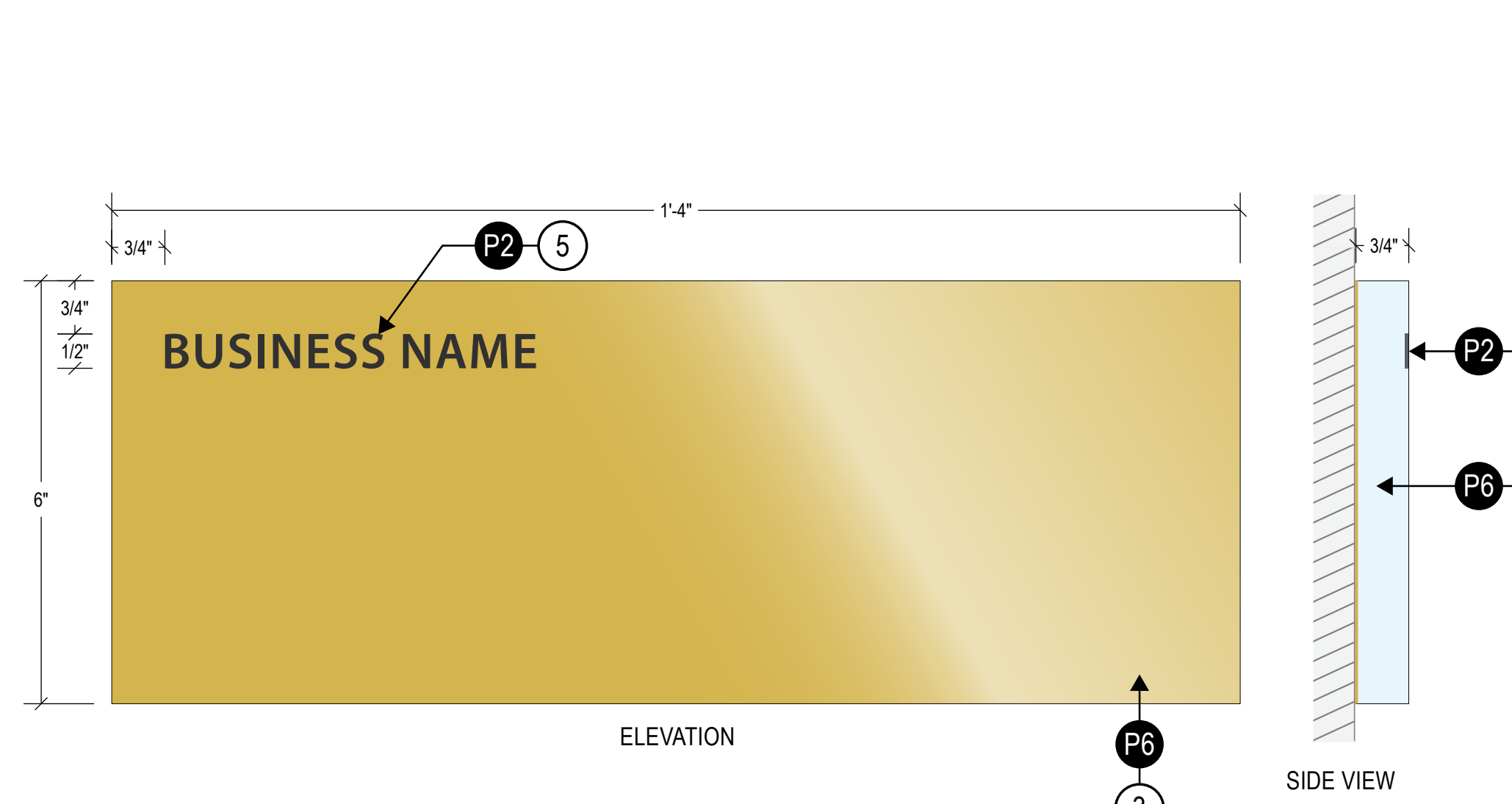
PLAQUE - ISOMETRIC VIEW (GOLD LEVEL PLAQUE SHOWN)
NTS



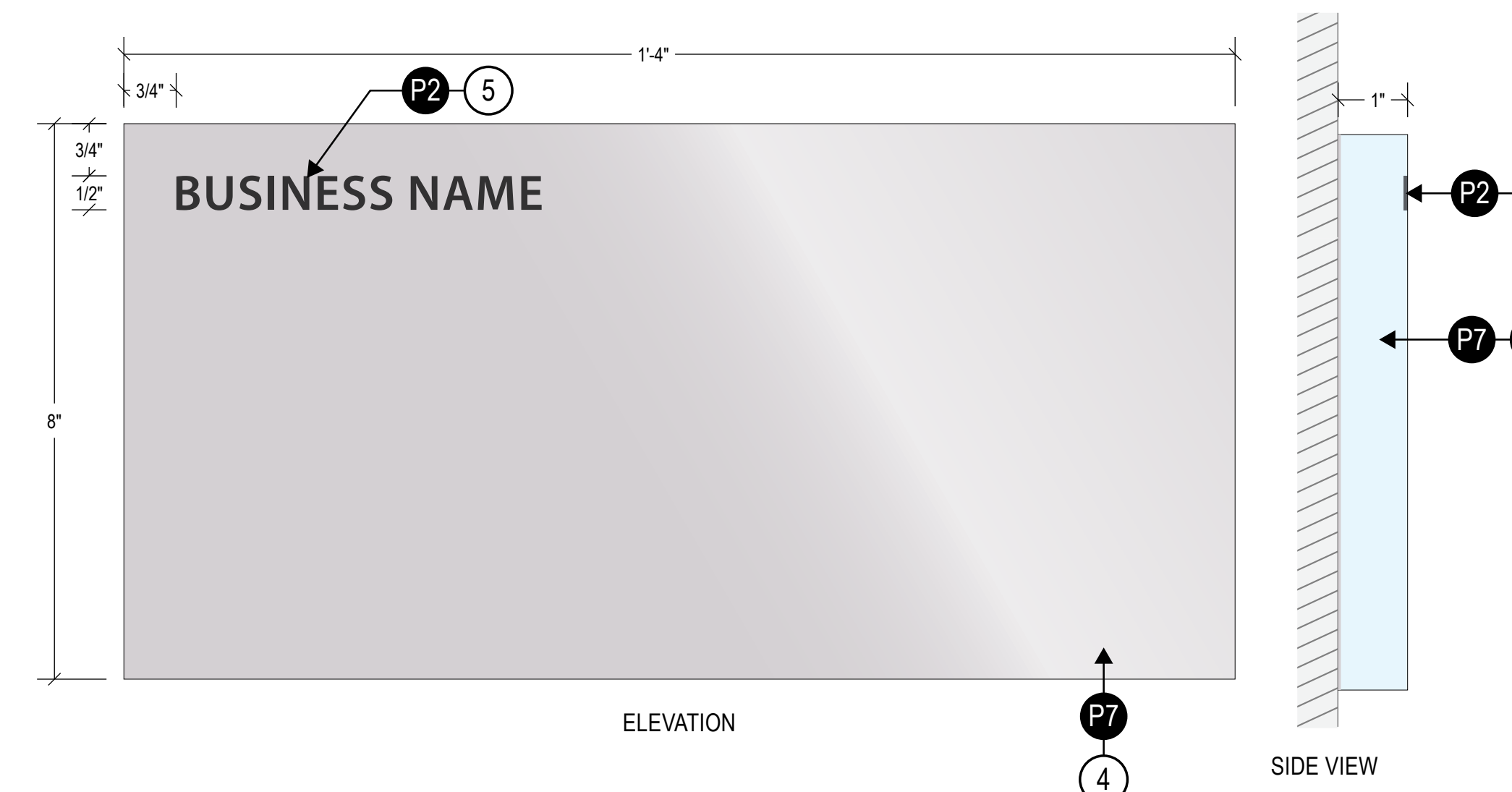
COPPER LEVEL PLAQUE - ELEVATION & SIDE VIEW (QTY. 15 SHOWN)
SCALE: 6"=1'-0"



SILVER LEVEL PLAQUE - ELEVATION & SIDE VIEW (QTY. 7 SHOWN)
SCALE: 6"=1'-0"



GOLD LEVEL PLAQUE - ELEVATION & SIDE VIEW (QTY. 6 SHOWN)
SCALE: 6"=1'-0"



PLATINUM LEVEL PLAQUE - ELEVATION & SIDE VIEW (QTY. 4 SHOWN)
SCALE: 6"=1'-0"



STILLWATER COUNTY CIVIC CENTER DONOR WALL