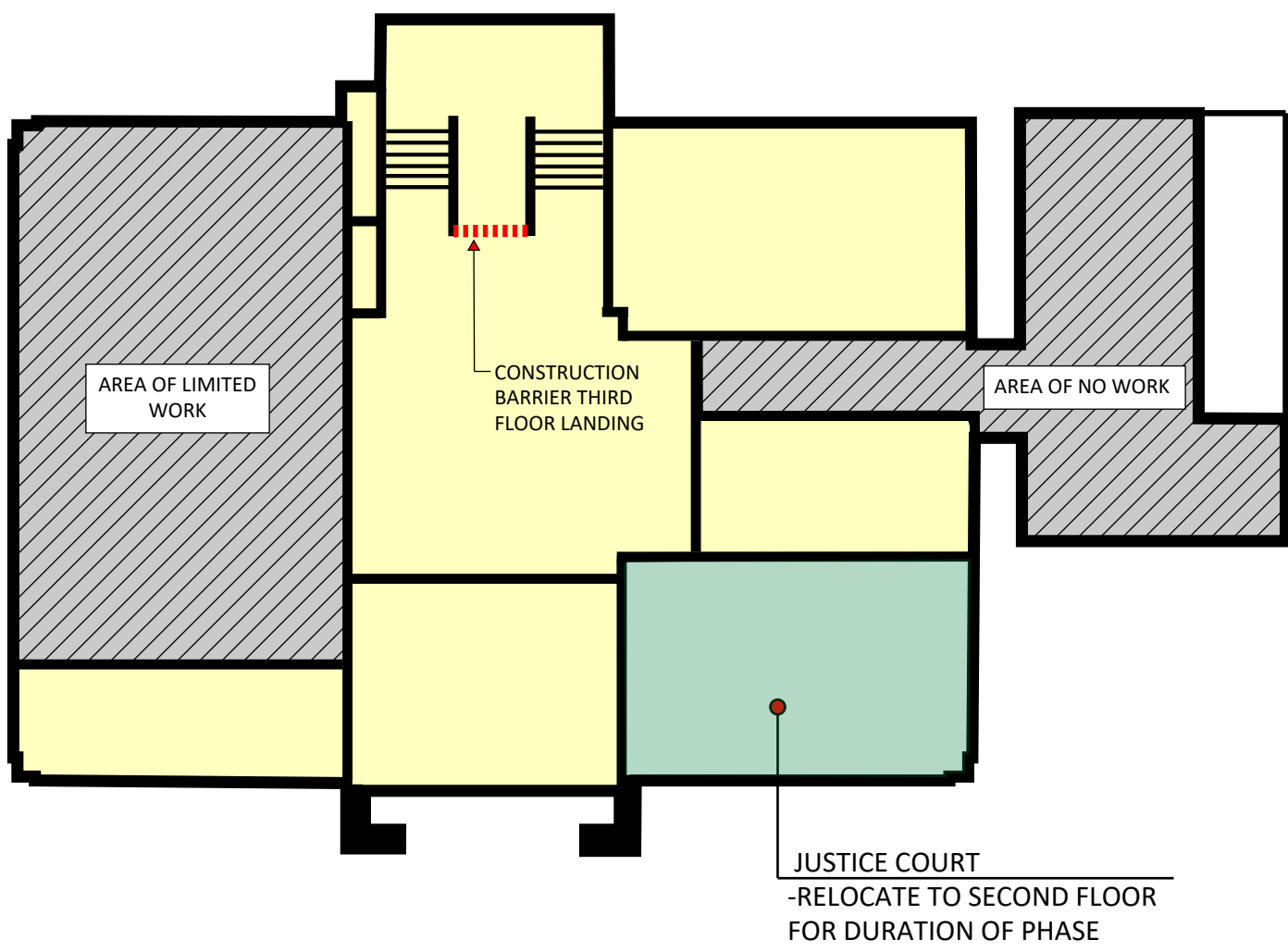
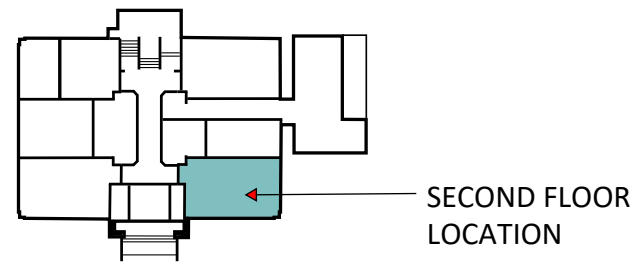


STILLWATER COUNTY COURTHOUSE RENOVATION - PHASE 2

PHASE 1 - FOURTH FLOOR RENOVATION 1/5/26 - 2/16/26



-JUSTICE COURT RELOCATED TO SECOND FLOOR SHARED CONFERENCE FOR DURATION OF PHASE 1.



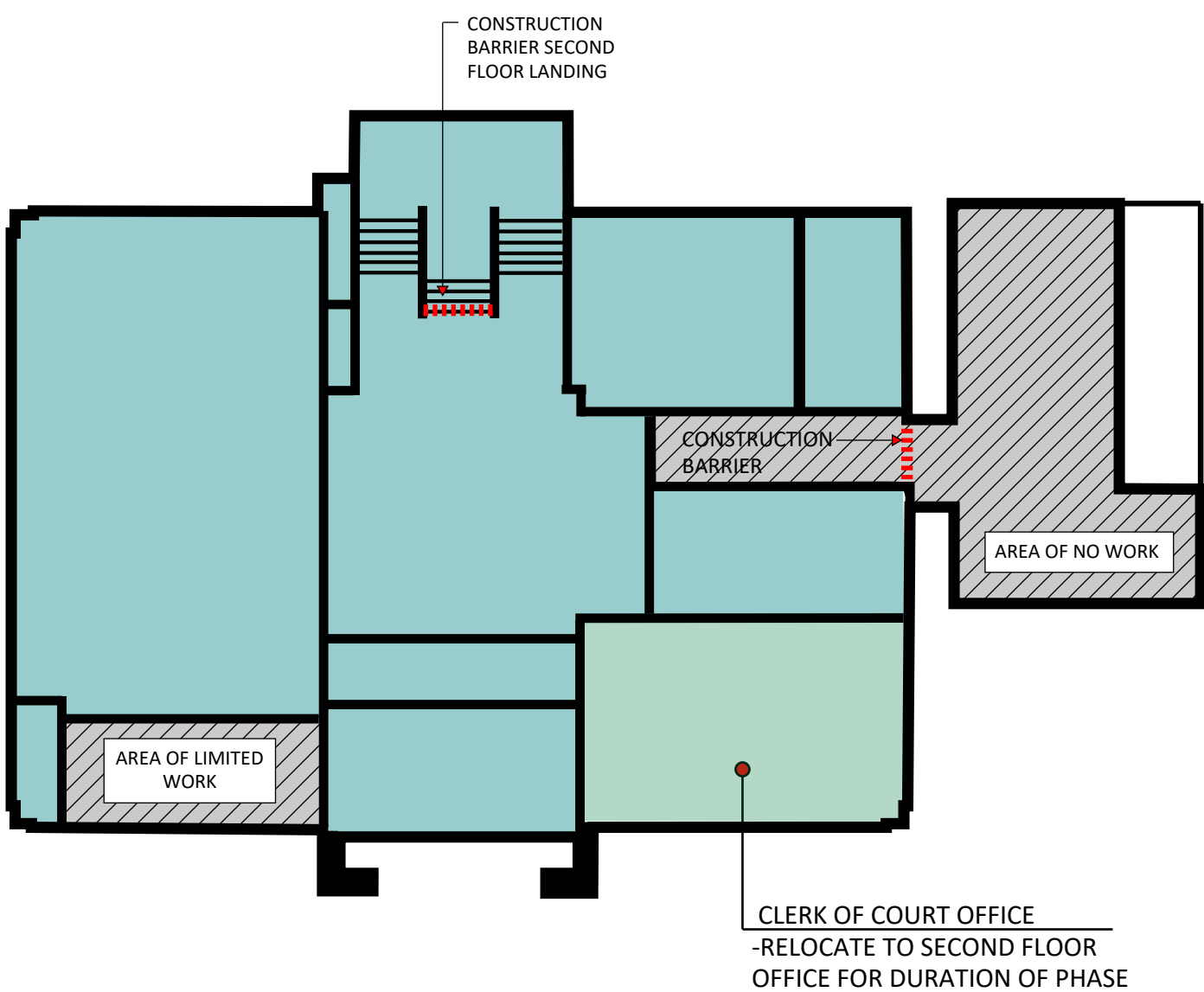
-ACCESS TO FOURTH FLOOR RESTRICTED TO CONSTRUCTION PERSONNEL ONLY DURING ENTIRE PHASE.

-CONSTRUCTION BARRIERS IN PLACE THROUGH ENTIRE PHASE AT LOCATIONS INDICATED

-JUSTICE COURT OFFICE TO VACATE THIRD FLOOR OFFICE AND MOVE TO NEW LOCATION UPON COMPLETION OF PHASE.

-LIMITED ACCESS TO OTHER FLOORS DURING PHASE FOR DATA, POWER, AND FIRE ALARM WORK.

PHASE 2 - THIRD FLOOR RENOVATION 2/16/26 - 3/30/26



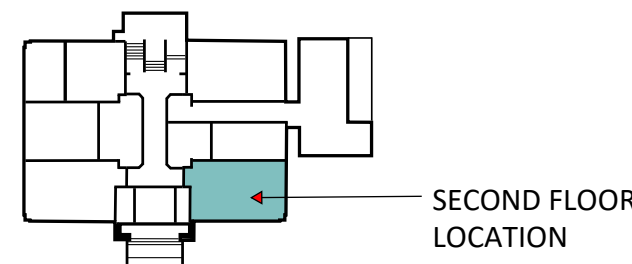
-DISTRICT COURT TO TEMPORARILY RELOCATE TO ALTERNATE LOCATION FOR DURATION OF PHASE

-CONSTRUCTION BARRIERS IN PLACE THROUGH ENTIRE PHASE

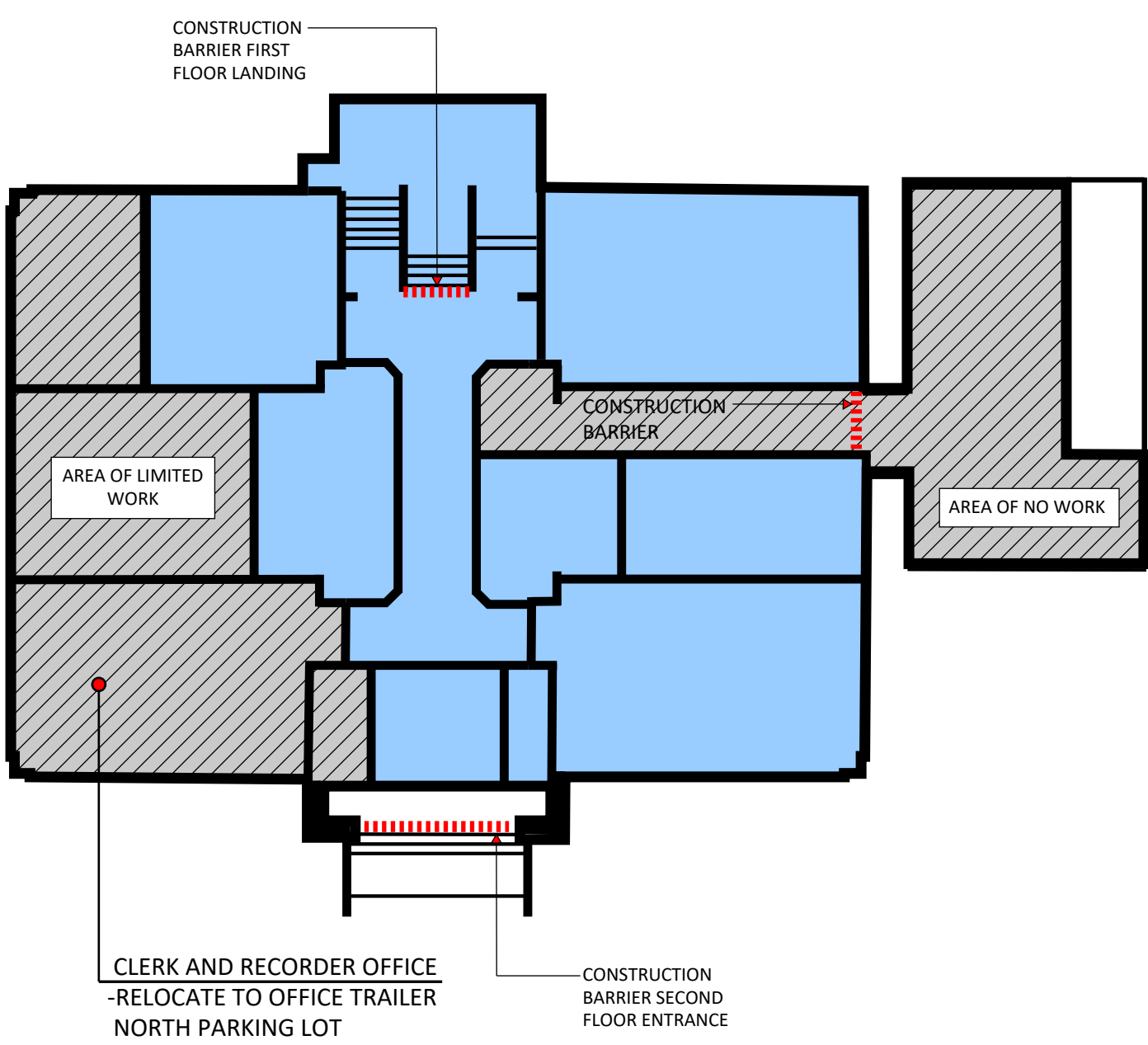
-ACCESS TO THIRD FLOOR RESTRICTED TO CONSTRUCTION PERSONNEL ONLY FOR DURATION OF PHASE

-LIMITED ACCESS TO OTHER FLOORS DURING PHASE FOR DATA, POWER, AND FIRE ALARM WORK.

-CLERK OF COURT OFFICE TO TEMPORARILY RELOCATE TO SECOND FLOOR FOR DURATION OF PHASE 2



PHASE 3 - SECOND FLOOR RENOVATION 3/30/26 - 5/18/26



-CLERK AND RECORDER OFFICE TO TEMPORARILY RELOCATE TO OFFICE TRAILER IN NORTH PARKING LOT FOR DURATION OF PHASE 3

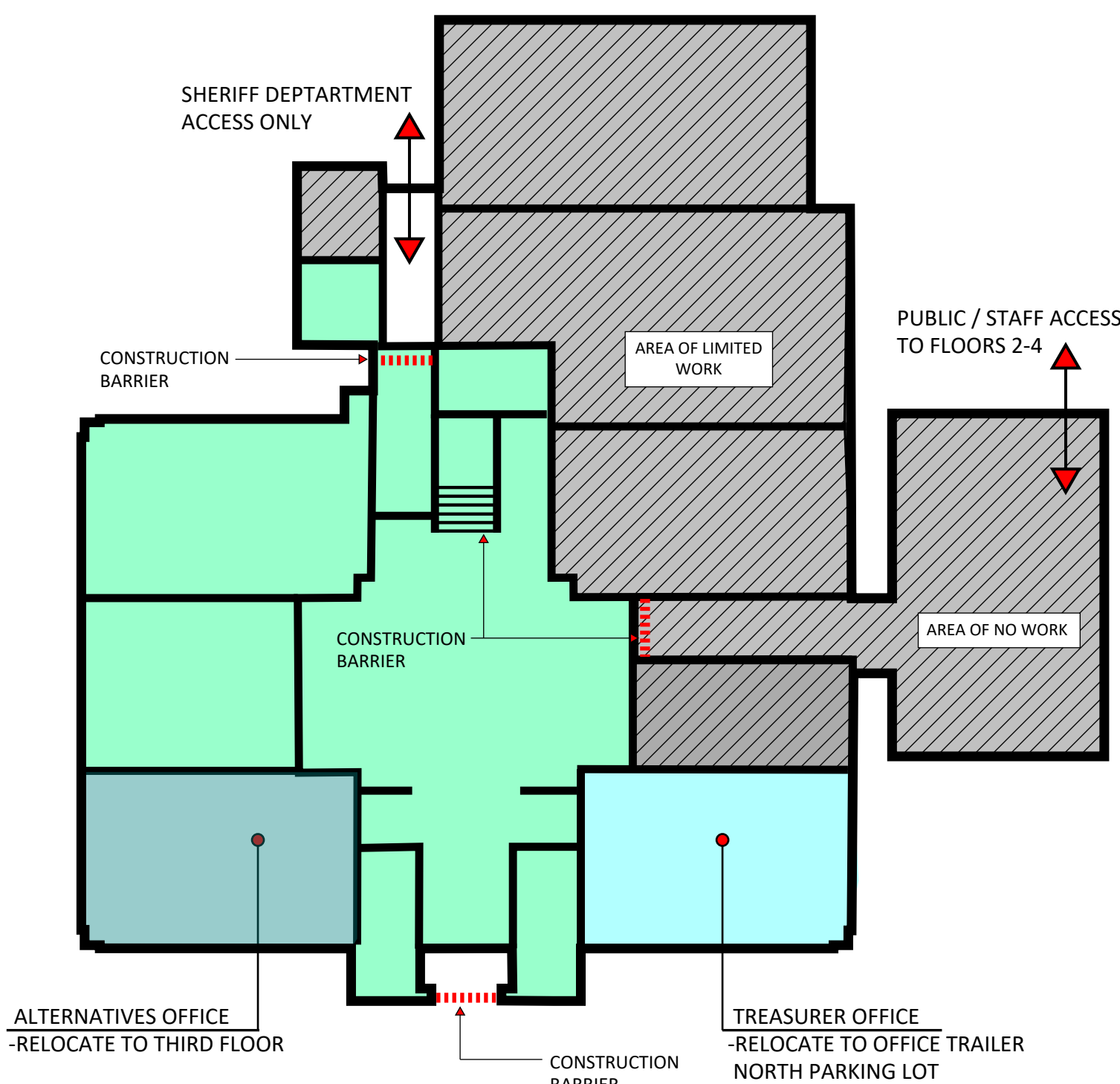
-ACCESS TO SECOND FLOOR RESTRICTED TO CONSTRUCTION PERSONNEL ONLY FOR DURATION OF PHASE

-CONSTRUCTION BARRIERS IN PLACE THROUGH ENTIRE PHASE

-LIMITED ACCESS TO OTHER FLOORS DURING PHASE FOR DATA, POWER, AND FIRE ALARM WORK.

-MSU EXTENSION OFFICE TO VACATE SOUTH ANNEX AND MOVE TO NEW LOCATION AT COMPLETION OF PHASE 3

PHASE 4 - FIRST FLOOR RENOVATION 5/18/26 - 6/29/26



-PUBLIC ACCESS MAINTAINED TO SHERIFF DEPARTMENT THROUGHOUT CONSTRUCTION VIA NORTH ENTRANCE

-ACCESS TO REMAINDER OF FLOOR RESTRICTED TO CONSTRUCTION PERSONNEL ONLY

-CONSTRUCTION BARRIERS IN PLACE THROUGH ENTIRE PHASE

-LIMITED ACCESS TO OTHER FLOORS DURING PHASE FOR DATA, POWER, AND FIRE ALARM WORK.

-TREASURER OFFICE TO TEMPORARILY RELOCATE TO OFFICE TRAILER IN NORTH PARKING LOT FOR DURATION OF PHASE

-ALTERNATIVES OFFICE TO TEMPORARILY RELOCATE TO THIRD FLOOR FOR DURATION OF PHASE

